



EPA 0000a CERTIFIED

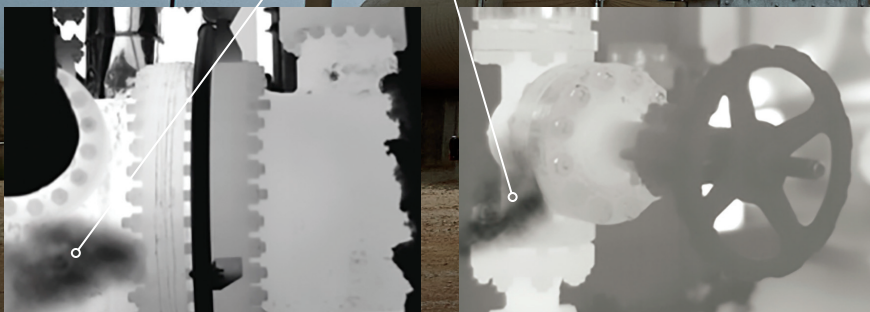
INDEPENDENT TESTING DEEMS FLIR CAMERAS COMPLIANT

FLIR is proud to announce its GF620, GFx320, GF320, GF300, and G300a cameras have been independently tested and deemed compliant with the EPA's NSPS 40 CFR part 60, subpart 0000a sensitivity standard for optical gas imaging equipment.

Testing was performed by the National Physical Laboratory (NPL), which confirmed the FLIR GF620, GFx320, GF320, GF300, and G300a optical gas imaging cameras are capable of imaging a gas that is half methane/half propane at a concentration of 10,000 ppm at a flow rate of $\leq 60\text{g/hr}$ from a quarter inch diameter orifice.

*Note: GFx320, GF320, GF300, and G300a cameras have identical detectors, hydrocarbon filters, optical platforms, and HSM algorithms. **The GF620 has a higher resolution detector.***

Methane leaks now visible
with FLIR OGI cameras



Calibration Requirements

Gas Detection: No Calibration Required

The GF620, GFx320, GF320, GF300, and G300a cameras' ability to detect gases is not influenced by any calibration process and will not degrade over time.

Gas Compound Detection

The GF620, GFx320, GF320, GF300, and G300a optical gas imaging cameras are capable of imaging a wide array of gas compounds, but were specifically designed to see the following hydrocarbons:

Methane	Ethylene	Octane
Benzene	Heptane	Pentane
Propane	Hexane	Propylene
Butane	Isoprene	Toluene
Ethane	MEK	Xylene
Ethanol	Methanol	1-Pentene
Ethylbenzene	MIBK	

Questions And User Manuals

To download the latest GF Manual or address questions to the FLIR Gas Detection team, please go to our FLIR Customer Support Portal: <http://flir.custhelp.com>

Gas Detection Training

Learn about ITC training courses for gas detection and 0000a program development: www.infraredtraining.com

Visit our blog for the latest updates in FLIR Gas Detection: www.flir.com/FLIRNews

**To See All Optical Gas Imaging Cameras
Offered By FLIR Visit:**

www.flir.com/ogi