

TECHNICAL NOTE



FLIR K2 MSX® THERMAL IMAGING FOR FIREFIGHTERS

Greater Image Clarity & Affordability

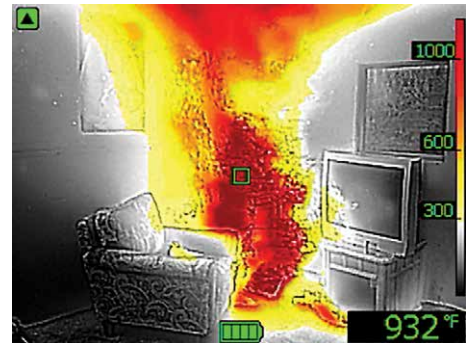
Thermal imaging cameras (TICs) have come a long way especially since FLIR arrived on the scene with the K-Series line a few years ago. The ability to develop and manufacture its own thermal imaging innovations and cameras put FLIR in the unique position to offer high-performance TICs at far more affordable price points than anyone else in the marketplace.

This has allowed more fire departments to stretch their budgets and outfit more trucks and teams with the technology. Now, FLIR is on a mission to arm every firefighter with a TIC – a reality that's more feasible today with the introduction of FLIR's new K2 featuring MSX Multi-Spectral Dynamic Imaging.

Priced at a remarkable \$1,295 USD, the K2 saves much more than just money. This is a compact, highly versatile and valuable camera that can help anyone on the crew see their way through smoky darkness, expedite strategic decisions, find the stranded, and work in greater safety. And its single button operation makes it easy to use, letting firefighters stay focused on the tough job in front of them.

What is MSX?

FLIR K2 TICs feature MSX enhancement which brings the 160 x 120 thermal images to vivid life on the bright 3" LCD. MSX meshes the best of both the visual and



The World's Sixth Sense™

TECHNICAL NOTE



thermal spectrum in a striking, original way, providing firefighters with higher definition video that highlights structural textures and features for better orientation and easier target identification.

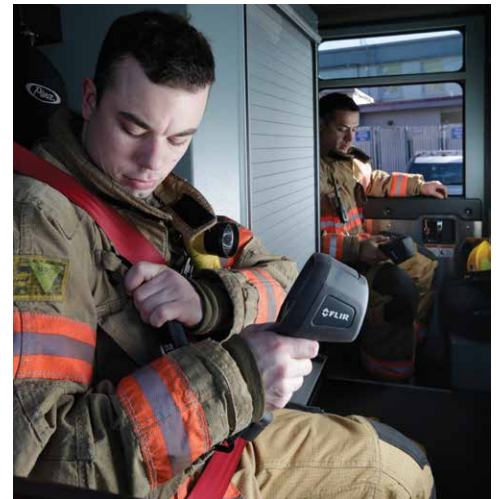
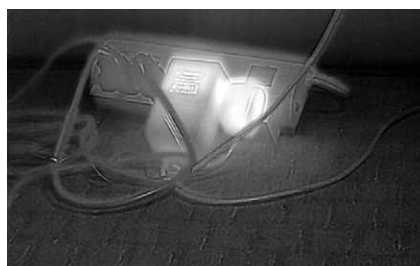
Patented by FLIR, MSX technology extracts high-contrast details from the K2's onboard visible light camera, and embosses them onto the thermal image in real time without compromising the K2's thermal imagery or temperature sensing and measurement capabilities. The result is a much sharper thermal image that allows firefighters to see key details within the scene, more effectively defining where doorways, window frames, obstacles and people are, for example.

MSX also makes numbers, nameplates, and other identifiable characteristics stand out more clearly. Bottom line: K2's MSX thermal imaging enhancement can help firefighters keep track of each other easier, stay oriented, and proceed with greater confidence in their critical roles as first responders dedicated to saving lives and property.

WITHOUT MSX



WITH MSX



A TIC for every firefighter.

For more information visit
www.flir.com/fire

The images displayed may not be representative of the actual resolution of the camera shown. Images for illustrative purposes only.